

VILLAGE VOICE

NEWS FROM WEST WICKHAM & STREETLY END

OCTOBER 2024

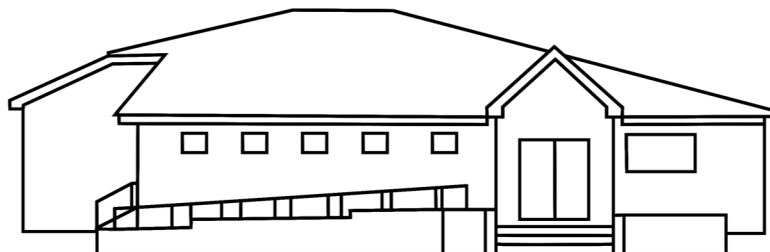
ISSUE 257

WHEELED BIN COLLECTIONS

Wednesday	2 October	Black
Wednesday	9 October	Blue & green
Wednesday	16 October	Black
Wednesday	23 October	Blue & green
Wednesday	30 October	Black

It is no longer necessary to book to attend any of Cambridgeshire's Household Recycling Centres.

For details of locations & opening hours visit: www.cambridgeshire.gov.uk/residents/waste-and-recycling/household-recycling-centres



THE VILLAGE HALL NEEDS YOUR SUPPORT

The Annual General Meeting of the Village Hall Trust is to be held in the Hall on **Monday 28 October at 7.30 p.m.** We welcome everyone to come to the meeting to see how the Hall is managed and make suggestions on how we can increase its use.

The Hall was built to provide recreation and leisure-time facilities for the village. It is managed by a committee, which includes representatives of the Parish Council and user groups, and other individuals who can be elected at the AGM. There are usually four meetings of the Committee each year. If you would be interested in being on the Village Hall Committee please let me know.

The agenda for the meeting will be posted on the village noticeboards and on the village website (westwickham.org)

Martin Kerslake, Chair, Village Hall Management Committee.
Email: hall_committee@westwickham.org

CHURCH SERVICES

6 October	11.00. Joint service of Holy Communion at Balsham Church
13 October	9.30. Holy Communion at St Mary's Church
20 October	9.30. Morning worship at St Mary's Church
27 October	9.30. Holy Communion at St Mary's Church

For more details visit www.grantavale.org.uk

★ HUB NIGHT! ★

WEST WICKHAM VILLAGE HALL

NEXT DATE: **19.10.2024** 7PM-11PM



USEFUL CONTACT DETAILS

West Wickham website:
<https://westwickham.org>

AgeUK Community Warden:
Lucy Cameron. T: 07436102865
email Lucy.cameron@ageukcap.org.uk

Granta Medical Practice / Linton Health Centre:
T: 0300 234 5555 option 3, followed by option 1 for appointments, option 2 for the Pharmacy.

DEADLINE FOR NEXT ISSUE Wednesday 16 October

Editors: Andrew Morris & Anna Fairhead
21 High Street, West Wickham
Cambridge CB21 4RY
T: 01223 290863

Email: editor_wvillagevoice@yahoo.co.uk

The Village Voice is sponsored by West Wickham Parish Council and delivered free to all households in West Wickham and Streetly End. The views expressed herein are those of the contributors.

STREETLY HALL FARM ANAEROBIC DIGESTION PLANT WHAT WILL HAPPEN NOW?

When Cambridgeshire County Council Planning Committee approved the application for an anaerobic digestion plant on 17 July, a number of conditions were specified; these apply during construction and in operation. The Decision Notice report contains 29 conditions, of which 7 are pre-commencement conditions and can be found on the Council's planning register.

Conditions cover building, running and maintaining the plant, including the new access road. Requirements for importing feedstock and managing the plant safely are detailed, including measures to protect the environment and nearby right of way. Hours of operation will be within 6am to 10pm and levels of noise and light must be controlled.

Before any work can start, a range of additional conditions must be fulfilled. Management plans must be submitted for traffic, ecological concerns, surface water and drainage and plans must also be submitted for landscaping and increasing biodiversity. An archaeology programme must also be implemented.

The final condition is the formation of a liaison group. The purpose of this group is to bring together all stakeholders: the operator, the local community, Parish Council(s), the Environment Agency (EA), District Council and a representative of the County Planning, Minerals and Waste Team. The liaison group will keep residents informed and give an opportunity to ask questions and get feedback, as well as be made aware of future proposals.

Christopher Covey has provided an update on progress:

1. Will you be taking the project forward personally or will you appoint a company to take responsibility on your behalf?

Continued on page 2

Streetly Hall Farm Anaerobic Digestion Plant continued

The facility will be run by a specialist operating company who will be available at all times to respond to any local concerns. The facility will be regularly audited to ensure compliance with operating requirements.

2. What is your initial and approximate timeline of work?
In 2025 - begin archaeology programme and continue with designs, EA permitting and highways surveys.
In 2026 - start site preparations and begin main construction programme.
In 2027 - complete the build and undertake sign-off by EA and other statutory bodies before operation begins.
3. Will there be a voluntary community fund?
The project will be contributing to the Alan Covey Memorial Fund, which will donate to local causes.

Julie Copas

COFFEE MORNINGS IN THE VILLAGE HALL

I think we had the best turn out ever to September's Coffee Morning, where there was a wonderful selection of home-made sweet & savoury this month – goodies to accompany the tea and coffee on offer. Thank you to Cynthia, Derek, Jan, Julie & Ronnie (& myself!) for their contributions. They are always much appreciated.

All donations made for the refreshments, minus the cost of hiring the Hall, go to charity and this month £55 has been donated to the Fuel Bank Foundation whose aim is to help more people access crisis support by expanding the reach of Fuel Banks. Suggestions of which charities to support are always welcome.

Next month's Coffee Morning will be on **Thursday 10 October**, from 10.30 in the Hall. Lifts can be arranged if needed.

Sue Thurston. C. 897811

COME AND JOIN US!

★ FISH & CHIPS ★ NIGHT!



SATURDAY

19.10.24

WEST WICKHAM VILLAGE HALL 7PM-11PM

**FISH / SCAMPI / CHICKEN /
VEG BURGER + CHIPS**

PLEASE PRE-ORDER BY 12 OCTOBER

Contact Nicci | Tel: 07527 879 135 | Email: nicci@innerlather.co.uk

NEXT HUB NIGHT: 15.11.24

WEST WICKHAM & DISTRICT GARDENING CLUB *Garden Fair in Bloom*

A huge thank you to everyone who came along and contributed so generously to the West Wickham & District Gardening Club's first Summer Gardening Fair on Saturday 31 August.



The organisers were a little nervous about how the 'new look' summer event would go, though when the doors opened it was clear it was going to be a success. An impressive array of plants, fruit, vegetables and preserves, books and tools, greetings cards and a well-stocked raffle tempted many, as did the fantastic array of cakes.

Most of all though, the event was a warm and inviting social event where members and visitors took time to chat as well as to enjoy the photography competition entries and, of course, make their own selection!

Forthcoming events for the Gardening Club this autumn are...

Monday 21 October. *Climbing roses for every situation.*
Talk by Simon White of Beales Roses.

Monday 18 November. *Botanical Gardens: A Grand Tour*
Talk by Jim Paine

Monday 16 December. *Christmas social evening*

Evening meetings are held in West Wickham Village Hall, starting at 7.30pm.

Further details from: Sue Boase T: 01440 762911
General enquiries (email) wwdgc@westwickham.org

Sally Collins, Events Committee

BALSHAM SINGERS

The Singers have started to prepare for their Christmas Concert on Saturday 14 December at 4pm in Holy Trinity Balsham. New members are always welcome, we do not audition so if you love to sing come along. We are particularly keen to encourage new tenors and basses. Rehearsals are held in the Pavilion near Balsham Church every Thursday at 7.30. There is parking adjacent to the Hall.

Any queries please contact our Music Director, John Clenaghan, john.clenaghan@sky.com

Last Christmas our concert was a sell out. Tickets are already available online at www.ticketsource.co.uk/balshamsingers and will be on sale locally in November - further details next month.

Jo Stinton

CUSTOMS AND FOLKLORE FROM THE PAST

Enid Porter has very little to say about Halloween customs in her *Cambridgeshire Customs and Folklore* (marking of Halloween today is very much, dare I say, an over-commercialised phenomenon of the 21st century). Writing in the late 1960s, she says that the 'observance of Hallowe'en in Cambridgeshire seems to have been confined to the remoter parts of the Fens, where belief in and fear of witchcraft remained firmly established until well into the present century'. The Horseheath historian, Catherine Parsons, writing about fifty years earlier, is much more forthcoming about witches, if not about Halloween customs themselves.

In 1915, Catherine wrote a much quoted article, 'Notes on Cambridgeshire Witchcraft' which was published in the *Proceedings of the Cambridge Antiquarian Society*. As well as more historic references to witchcraft, she included information that she had personally collected from Horseheath and other local residents. She says that she had some difficulty in collecting this because there was still a dread of offending the current parish witch 'to whom everyone must be extremely courteous'. This may be one of the reasons why she decided not to name either her informants or the names of witches in print. Luckily, her original notebooks, preserved in several boxes in Cambridge Archives at Ely, do provide names which enable the supposed witches to be more fully identified.

There are, tantalisingly, only a few mentions of witchcraft in West Wickham. Perhaps the most dramatic, and the only one which found its way into the article, is the case of the witch who was dying and the problem of how to get rid of her familiars or imps (devilish spirits said to be a witch's assistants, often said to resemble white mice – which probably means they were). The person nursing her tried burning them in the bread oven but they screamed so much that she took them out and returned them to the dying witch who was apparently found covered in burns while the imps remained unscathed. The imps were finally put in her coffin and buried with her in the churchyard. Mrs Chinery, who lived somewhere near the White Hart, was identified as the witch and this is likely to be the widowed Sarah Chinery who died in 1879 aged 77. Needless to say, there is nothing untoward about her burial recorded in the parish register!

Two of the other records relating to witchcraft in the village involve the Scotchers, James and Sarah, who moved to West Wickham from Hildersham in about 1845 and lived here until their deaths in 1890 and 1887 respectively. James ran a shop, probably in a short row of cottages, long demolished, next to Pratts Farm which became known as Scotcher's Yard. Sarah's pig, which had just been killed, lay on a rack which suddenly collapsed after Mary Wollard (with the wonderful nickname Poll Job), a supposed witch, passed by muttering. On another occasion, James was supposed to have chalked two circles on the floor of his oven, recited the Lord's Prayer backwards whereupon a cockerel suddenly appeared frightening his elderly neighbour, Thomas Hiner (who died in 1875 aged 88). Apparent coincidence and practical joke – such is the evidence on which stories of witchcraft are based. Catherine Parsons later said that talk of witchcraft and superstition eventually died out after the horrors of the First World War made these seem trivial and irrelevant.

Janet Morris

WEST WICKHAM & DISTRICT LOCAL HISTORY CLUB

Monday 14 October
7.30pm Village Hall
RAF Wrattling Common Then & Now
Talk by Richard Adams
All are welcome.

Further details from: Janet Morris, 21 High Street.
T: 290863 Email: jmmorris@jmmorris.plus.com

SAVE THE DATE

A Christmas Fayre will be held in the Village Hall on the afternoon of Saturday 7 December. Look out for more details.

Sionagh Kerslake & Di Licence

FROM THE VICARAGE

In their articles last month both Iain and Hannah reminded us to be thankful for the many blessings we receive in this life. This month I would like to continue that theme with, perhaps unsurprisingly for me, an emphasis on health. October 18th is the festival of Luke the Evangelist, author of not only the Gospel that bears his name but also of the Acts of the Apostles. Luke was a doctor (Luke the beloved Physician) and his gospel reflects both his interest in the medical aspects of Christ's ministry but also in the compassion our Lord showed to the suffering. Luke gives us a fascinating insight into the availability of healthcare in his account of the healing of the woman suffering from haemorrhages when we hear that, before touching the hem of Jesus garment, she had been 12 years without cure and, as we hear elsewhere, had spent all her money on doctors.

October also sees the commemorations of both Elizabeth Fry and Edith Cavell. Elizabeth Fry is best known as a prison reformer, her work for the sick, particularly in the training of nurses, being overlooked. Fry established a School of Nursing at Guy's Hospital in 1840 in advance of Florence Nightingale at St. Thomas's and it was a group of "Fry Nurses" that Florence took to the Crimea. Perhaps better known is Cavell who selflessly cared for German and British Troops in World War I and in 1915 died in that cause.

These three people, in their different ways, demonstrated the love and care our Lord had for the sick and suffering in times when care was scarce or simply not available. Today we here are privileged to have access, largely free of charge, to healthcare provided by dedicated and highly skilled front-line professionals working tirelessly day and night in sometimes impossible circumstances. Our NHS most certainly does need fixing and I hope and pray that our politicians and leaders have the courage and resolve to do what is needed but, in the meantime, let us be thankful for all those who day by day are following the example set by St. Luke, Elizabeth Fry and Edith Cavell.

Keith Day

ALLOTMENT RENT COLLECTION

Please make a note that I will be collecting the rents for 2024/2025 on Saturday 5 October 10.30am to 12 noon in the Village Hall.

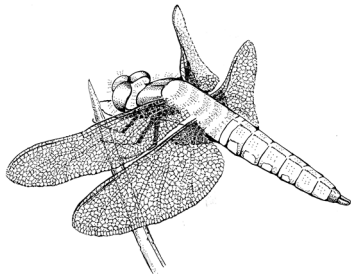
Jenny Richards (Parish Clerk).
Email: parish.clerk@westwickham.org

NATURE NOTES

Last month I drew attention to the lack of **wasps** this year, and no sooner had I submitted my copy than I received an email from the joint editor with a picture of a wasps' nest she had found on the edge of a field at Hill Farm. So there are some wasps about – two of them managed to find our greengages – but overall there haven't been many. On the same theme, I noticed on a recent walk numerous '**robin's pincushions**' attached to dog rose in the hedge. These are caused by the larvae of a gall wasp which live in the hardened centre of the gall.

Wasps' nests are things of beauty, but even more so was the **bees' nest** also found at Hill Farm, in a tree. Made entirely from wax which the bees produce themselves, this structure looked as though it had been precision engineered because each sheet of wax was perfectly flat and evenly spaced. They were wild bees that now have a new home in Streetly End.

There have been many **dragonflies** on the wing this month. We have had a lovely **emperor** visiting our pond and Di has had several come in to her conservatory. They are a fabulous vision of blue and green, extremely active and able to change direction in an instant.



Near to Hare Wood I saw a good number of dragonflies, which I guessed were **Southern Hawkers**, flying out and back from the trees. Last year at about this time there were **Hobbies** in the area (falcons that resemble large swifts). These birds are specialists at catching dragonflies, but there was none present on this occasion to take advantage of the opportunity.

It is a time of year when shield bugs are regularly seen – possibly when we are cutting the hedge or picking fruit. Three of the most common are the Hawthorn Shield Bug, the Green Shield Bug and the Sloe Bug. Plenty of the latter keep falling into my punnet of raspberries when I am picking. They feed on sloe and other berries, but don't seem to do much damage to the raspberry crop and are reasonably compliant when I remove them from the punnet.

For many species of bird, autumn is a time for flocking together, either in preparation for migration like swallows, or to take advantage of the food sources available like the corvids and the finches / buntings. Collective names for birds become relevant at this time and Di has been doing some research. **Swallows** en masse are either a 'swoop' or a 'richness'. Most people know that a flock of **goldfinches** is a 'charm' but not so many are aware of the derivation of this word, from the Old English *cyrm*, meaning a chatter of birdsong. **Linnets** are a 'parcel' not so often seen in West Wickham these days, but we do have the occasional special delivery. Their song is not unlike the goldfinch's. Like swallows, most warblers head for Africa at this time of year but Di was very lucky to hear a yet-to-depart willow warbler in the churchyard giving a final swansong before heading for warmer climes.

Deer are ever present in the local area and many people are having deer encounters, with roe deer, fallow and muntjac. The latter often wander around in daylight, seemingly untroubled by humans, and bark in the night, disturbing our sleep. It is currently the rutting season, so if you walk beside Hare Wood you may well hear a fallow deer stag bellowing.

Please send your nature sightings to:
Peter Grieve. T: 01223 897811, E: mail@petergrieve.co.uk
Di Licence. T: 290434, E: dianarubylicence@gmail.com

Drawing by Maureen Walker

FRIENDS OF ST MARYS DRINKS AND NIBBLES IN THE CHURCH

Many thanks to those friends who came on 6 September. We had a fascinating and entertaining presentation from Janet Morris about the Reverend John Wollaston and his family who left the Old Vicarage in West Wickham to sail to Western Australia, a hazardous and extraordinary journey. The Friends of St Mary's have donated £3,000 towards the upkeep of our historic building and its churchyard. If you would like to be a friend because you value this church and its surroundings, please contact Marcus Cornish Treasurer of the PCC at wmcorn@hotmail.com

PCC NEWS

The Parochial Church Council of St Mary's Church have bought two commemorative tapestry kneeler designs - the Platinum Jubilee and The Kings Coronation. If there is anyone who enjoys doing tapestry and would like to do the Platinum Jubilee design please contact Nicky Cornish on the village whatsapp or 07778053680

MACMILLAN COFFEE MORNING

The coffee morning held recently in Balsham Pavilion was very well attended and thanks to the generosity of those present, £1,020 was raised.. Thank you. Joanna Saunders

A CONCERT IN HILDERSHAM CHURCH CHAOS STRING QUARTET

BBC New Generation Artists

Monday 21 October at 7 30pm

Tickets £15 from www.eventbrite.co.uk/d/united-kingdom--cambridge/chaos-string-quartet or at the door

Beethoven Opus 131

Mozart KV 159

Haydn Opus 33/3 The Bird

The Chaos String Quartet, who have been playing together for around five years, have had the good fortune to be selected for a place with the BBC New Generation Artists Scheme. This scheme aims to promote and support young musicians, launching them on their national and international careers, the placement lasting two and a half years. This concert will be the first in a series of events at Hildersham Church to raise money for the church and coincides with the launch of the Friends of Hildersham Church. Next on the calendar, in December, will be a concert of baroque music performed by graduate students from the Royal College of Music, London. There will also be a series of lectures starting with the gardener Barry Gayton, known to many for his regular appearances on the Radio Cambridge Gardening Programme.

For more details contact Athene Hunt:
huntcam2015@gmail.com

GRANTA MEDICAL PRACTICES Vaccinations Update

As we approach the colder months, there are a number of vaccines that can help protect you against serious illness, including:

RSV VACCINE (new for 2024). This vaccine helps protect against Respiratory Syncytial Virus (RSV) that can make babies and older adults seriously ill. This is offered all year round and is recommended if:

- you are pregnant (from 28 weeks onwards) to help protect your baby after they are born
- you are aged 75 to 79 (if you turn 80 on or after 1 September 2024 you're eligible for the RSV vaccine until 31 August 2025. You are not eligible for the RSV vaccine if you turned 80 before 1 September 2024)

FLU VACCINE. This vaccine helps protect against flu, which can be a serious or life-threatening illness. It's offered on the NHS every year in autumn or early winter to people at higher risk of getting seriously ill from flu. You can get the vaccine if you are:

- aged 65 or over
- have certain long-term health conditions
- are pregnant
- live in a care home
- are the main carer for an older or disabled person
- receive a carer's allowance
- live with someone who has a weakened immune system

SHINGLES VACCINE. This vaccine helps protect against shingles and is offered all year round. Shingles is a common condition that causes a painful rash. It can sometimes lead to serious problems such as long-lasting pain, hearing loss or blindness. You're more likely to get shingles, and it is more likely to cause serious problems, as you get older or if you have a severely weakened immune system. The vaccine is recommended for:

- people who turn 65 on or after 1 September
- people aged 70 to 79
- people aged 50 and over with a severely weakened immune system

PNEUMOCOCCAL (PNEUMONIA) VACCINE. This vaccine is offered all year round. It helps protect against serious illnesses like pneumonia and meningitis and is recommended for:

- babies
- people aged 65 and over
- children and adults at higher risk of getting seriously ill

Please speak to any member of our reception team to check if you are eligible for any of the above vaccines and to book into a vaccine clinic.

Sandra East, Head of Patient Services.
Email: cpicb.grantapatientservices@nhs.net

LOST & FOUND

Near the entrance to Hill Farm. A set of keys including house keys and a car lock/start controller.

If you think they are yours please get in touch.

Andrew Morris. T: 290863

1ST HORSEHEATH BROWNIES

We started back in mid-September with our merry band of 8 Brownies for the next year of adventure and fun. Plans already in the mix are a visit to a trampoline park in Norwich; a pyjama party sleepover with Rainbows and Guides to celebrate World Thinking in February; hopefully a trip to the Panto in December plus we have Christmas, Halloween and Harvest to look forward to as well. We are finalising our plans for our "want to know about Brownies" evening, for anyone who is interested in finding out more about joining Brownies or as a Girlguiding volunteer.. This term we will also be working on our First Aid skills as Katie and I think you're never too young to learning the basics of first aid.

If you have been intrigued by what you have read about the Brownies and you have a 7-year old girl, or older, living in your home and think she might like to join us, please email me on horseheathbrownies@gmail.com or register her on www.girlguiding.org.uk/information-for-parents/register-your-daughter/ and I'll get in touch. Also, if you have a 5 year old daughter she could join the Rainbow or the Guides if she is over 10 years old. We have units in Linton and Brinkley that have spaces for both. Email me for more details.

Pauline and Katie

SAFFRON WALDEN ROTARY THANKS YOU FOR CONTRIBUTING TO THE COLLECTION FOR UKRAINE

I would like to convey our sincerest thanks to all who gave so generously at our collection in late August for displaced Ukrainians. Their continuing support for essential food, household and personal hygiene items is highly praiseworthy especially as the collection was our fourth held at Abington School. The amount collected completely filled one large van and over £1,000 in monetary donations was received, that means with gift aid, over £1,200 will go to help with buying food and transport costs. All the donations go to UK-Aid, a Felsted based charity who sorts the items from many sources and arranges a convoy of vehicles to go to Ukraine every three to four months.

Every one of our collections has been a success due to the people of Abington and surrounding villages showing their understanding of the desperate situation that so many families find themselves in this vicious conflict. Their generous donations together with the twelve collections we have held on Saffron Walden Common, since the conflict started, has resulted in food, clothing, bedding etc. and money that has been used to buy twenty-one generators, pallets of food and to help finance UK-Aid's transport costs as they take the donated items to those in need. The recipients have been so grateful and appreciative of our support and, through the volunteers transporting the goods and by online media, they have extended their heart-felt thanks which is really aimed at the donors here in our communities.

Tony Collett on behalf of Saffron Walden Rotary.

★ HUB NIGHT! ★
WEST WICKHAM VILLAGE HALL

NEXT
DATE: **19.10.2024** 7PM-11PM



LETTER TO THE EDITORS

There have been a number of bonfires this summer at a property in Streetly End. Summer isn't a great time for bonfires as the smoke comes into many gardens affecting those outside and their washing. It is also a potential health hazard, detracts from our enjoyment of being outside and unnecessary. There is a new household waste recycling operation in Haverhill (opened in August) which in the main is inside and has a vastly increased capacity meaning that although booking is required there are many time slots available at short notice. If there is a very large amount of waste then a chipper could be the answer or alternatively leave the debris to rot in an area benefitting wildlife, insects. If bonfires are still needed then a dull winter's day would be best.

Name & Address supplied.

(Ed. Guidance on bonfires and a link to make a nuisance complaint can be found on the South Cambridgeshire District Council website:

(www.scambs.gov.uk/environmental-health/pollution/smoke-and-bonfires/)

BALSHAM WI

Our recent meeting featured the inspirational Miles from Morgans Butchery as our speaker. Miles explained to us how having a stroke had impacted on him and his career and explained how he had had to adapt to his limitations. He was unable to continue in the job he had pre-stroke but was desperately keen to work. So, he went back to his first job as a butcher, but started his own business. After a rocky start, and with the help and support of his family this has been a success, and he greatly enjoys being able to do it. He then proceeded to show us how to joint a chicken (making it look so easy), and how many different dishes you can make from a large chicken rather than just roasting it. Several members vowed to make the trip to Baythorne Hall to visit his shop.

Our next meeting will take place on 8 October. Our speaker will be Dr Gwenda Kyd with her talk entitled 'Incredible edible (and drinkable) plants'. Visitors are always welcome – why not come and try us out? Our meetings are held on the second Tuesday of each month at 7.30pm in the Pavilion, Balsham. Please get in touch if you are interested in joining us – balshamwi@gmail.com or send a message on Facebook, @Balsham WI.

Debbie Mower

West Wickham Village Hall

**COFFEE
MORNING**

From 10.30 on Thursday

10th October



Selection of teas & coffee
Variety of homemade cakes

LIFTS AVAILABLE

Call Di Licence (290434) or
Sue Thurston (897811)

LINTON VILLAGE COLLEGE NEWS

Last month saw us say our final goodbyes to our Year 11 Class of '24. Students came to collect their GCSE results during the holidays and there were many exceptional GCSE performances at Linton Village College.

It has been a busy start to the new school term and this coming week students will be invited to attend our LVC Enrichment Fayre. At LVC we pride ourselves on the wealth of enrichment opportunities we can offer our students to support with their personal development. This year every department in the school is offering a club or group for students to attend. It is our hope that every student in Year 7 will attend at least one club, meaning that they can access fully the all-round education.

We are also very proud of the achievements of LVC students outside of school. Josh Smith in Year 10 is amongst a number of students that compete at a high level in their sport outside of school. Josh recently managed to get to the final round of the British Kart Championships after numerous qualifying rounds. Karting is where the likes of Lewis Hamilton started their racing careers, which is an ambition of Josh's in the future. Josh competes around the UK and trains in races once a month at the Kimbolton track near Huntington. Josh has his own kart and says the skills needed to compete are stamina, strategy and quick thinking as he frequently reaches speeds of 70-80 miles per hour.

Helena Marsh, Principal

HELP YOUR LOCAL COMMUNITY – BECOME AN ON-CALL FIREFIGHTER!

Cambridgeshire Fire and Rescue Service is looking to recruit more on-call firefighters to help local communities by responding to emergencies.

On-call firefighters are a vital part of your fire and rescue service. They respond to a wide range of incidents, from fighting fires and attending road traffic collisions to rescuing people and animals in need. They also respond to medical emergencies.

In addition to responding to emergency incidents, on-call firefighters support their communities by providing a range of safety advice, helping people to keep safe in their homes. Being an on-call firefighter has many benefits. As well as being paid an annual wage and for the time spent at incidents or training, there are also opportunities to develop first aid skills and heavy good vehicle driving qualifications.

Find out more about becoming an on-call firefighter by visiting our website: www.cambsfire.gov.uk/oncall

GET YOUR OWN HOME FIRE SAFETY ACTION PLAN!

Cambridgeshire Fire and Rescue Service is committed to supporting the safety and wellbeing of residents in all our communities. We have an online home safety check that you can fill in to make sure you're keeping your home fire safe. Using our online home safety check, you can carry out your own fire risk assessment to make sure you are keeping you and your family safe from fire. Our online tool takes you through some simple questions about you and your home and provides an action plan that you can download and print. You can carry out a check for yourself, or any family members. Start your check by visiting: <https://www.cambsfire.gov.uk/home-safety/home-fire-safety/>.

For more information log on to www.cambsfire.gov.uk, follow us on social media or call 01480 444500.